

Northern Transit Interlocal Newsletter

May 2026

NTI is Hiring

If you cherish the thrill of the open road and enjoy connecting with new individuals, we have a fantastic opportunity waiting for you. Become a part of our esteemed team, where we provide flexible shifts up to 28 hours per week, local, home every night, competitive pay, and earned paid time off.

Part-Time CDL Bus Drivers Needed We are currently looking for part-time CDL bus drivers! We are also open to hiring a full-time driver for the right candidate. If you don't have a CDL but maintain a clean driving record, we are willing to provide training for the suitable applicant.

For more information call
406-470-0727
or apply in person at 226 1st St.
South suite 101 Shelby, MT
59474



Enjoy the Ride!!!

Reminders



NTI will be closed on May 25th in observance of Memorial Day, as we pay tribute to those who sacrificed their lives for our freedom.

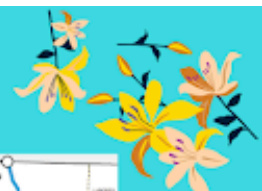
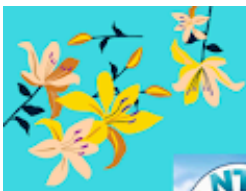
Featured Driver of the Month Heidi



#Meet Heidi

Heidi radiates pride and care within our team. She expresses her love for working at Northern Transit, highlighting the tremendous support she receives from both administration and fellow drivers. Heidi recognizes the value of this service to our smaller communities and takes great joy in contributing to making transportation more accessible for those in need.

When she's not behind the wheel, Heidi enjoys engaging in crafts and crocheting, all while treasuring precious moments with her family. We are thrilled to have Heidi as a valued member of our NTI family!



NTI Northern Transit Interlocal
Enjoy the Ride!

Free, Safe, Reliable Transportation for Our Communities

- 18 YEARS OF SERVICE
- 170,000+ LIFTING PASSENGERS
- 21,247 RIDERS IN 2023
- ZERO ACCIDENTS
- 4840+ HOURS OF SERVICE
- 7,000+ DEDICATED FOLLOWERS

SERVING TOOLE, GLACIER & PONDOSA COUNTIES

WHEELCHAIR ACCESSIBLE NO COST PUBLIC TRANSIT SPECIAL APPOINTMENTS & REALTIME COMMERCIAL CONTRACTORS & LONG TERM TRANSPORTATION

It's so easy to get you there!



Enjoy a Smooth Journey with Northern Transit Interlocal Today!

We offer weekly routes to a range of destinations, including Great Falls, Conrad, Valier, Shelby, Cut Bank, Browning, and Kalispell. Our services also extend to the Canadian Border and beyond.

Whether you're heading to the airport, attending medical appointments, running errands, visiting family, or embarking on an exciting adventure at Glacier National Park, NTI ensures your safe arrival at your destination.

Get in touch with us today at 406-470-0727 or visit our website at www.northern.rural-transit.com for route information and more details!



Featured Advertiser of the Month!



We are excited to highlight Marketplace On Main as our featured advertiser for the month of May and express our appreciation for their support. Here are some of the wonderful experiences you can enjoy: Discover authentic products crafted in Montana, explore a variety of locally handmade items, purchase unique gifts from local vendors, savor a delicious coffee, browse through their art gallery, participate in engaging classes, and much more!



WHAT BETTER WAY TO SHOW YOUR SUPPORT THAN WITH AN ANNUAL SPONSORSHIP? YOUR CONTRIBUTION GOES DIRECTLY TOWARDS OPERATING TRANSIT SERVICES THAT ARE VITAL FOR IMPROVING THE QUALITY OF LIFE IN OUR RURAL COMMUNITIES. IF AN ANNUAL COMMITMENT ISN'T FEASIBLE, CONSIDER MAKING A ONE-TIME DONATION OR ADVERTISING YOUR LOGO ON ONE OF OUR BUSES. FOR MORE QUESTIONS, FEEL FREE TO REACH OUT TO KIM AT 406-470-0725.



*****NTI IS ALL ABOUT PEOPLE HELPING PEOPLE!*****
[HTTPS://NORTHERNTRANSITINTERLOCAL.TICKETSPICE.COM/DONATION-ONLY](https://northerntransitinterlocal.ticketspice.com/donation-only)